



L.K. MACHINERY, INC

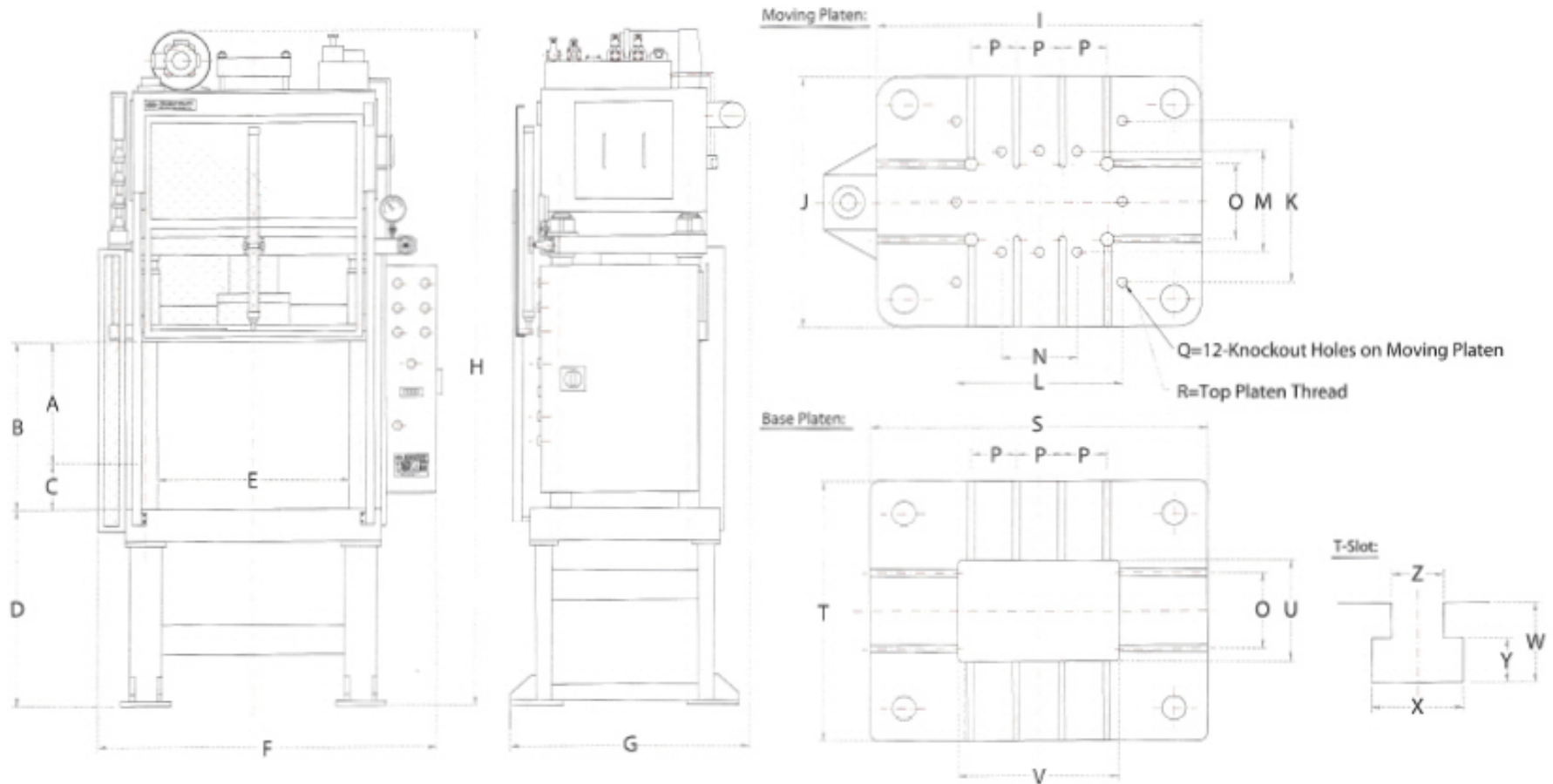
## Dimensions for L.K. Trim Press Machinery

MODEL	A	B	C	D	E	F	G	H	I	J	K	L	M	N	O	P	Q	R	S	T	U	V	W	X	Y	Z
QTP20	18"	26"	8"	35.5"	24.0"	55.0"	48.0"	112"	32.3"	24.8"	16.0"	16.5"	10.0"	7.5"	7.5"	4.5"	5/8"	1/2"- 12	33.5"	25.8"	10.0"	15.6"	1.08"	1.26"	0.48"	0.71"
QTP30	18"	26"	8"	35.5"	29.5"	63.0"	53.0"	114"	38.2"	26.4"	17.0"	16.5"	11.0"	7.5"	11.5"	6.6"	1 9/32"	3/4"- 16	39.5"	28.0"	14.0"	22.0"	1.08"	1.26"	0.48"	0.71"
QTP40	18"	26"	8"	35.5"	36.8"	67.0"	55.5"	115"	46.3"	36.5"	19.0"	19.0"	13.5"	11.0"	13.0"	7.6"	1 9/32"	3/4"- 16	48.0"	38.0"	15.0"	25.0"	1.08"	1.26"	0.48"	0.71"
QTP50	24"	33.5"	9.5"	35.5"	37.5"	71.0"	56.0"	127"	48.0"	38.0"	21.0"	19.0"	15.0"	13.5"	13.5"	7.6"	1 9/32"	3/4"- 16	49.5"	39.5"	16.0"	26.0"	1.08"	1.26"	0.48"	0.71"
QTP75	24"	33.5"	9.5"	35.5"	42.5"	76.0"	61.0"	131"	54.0"	43.0"	23.0"	20.0"	17.0"	13.5"	15.5"	8.0"	1 9/32"	3/4"- 16	55.5"	44.5"	18.0"	29.0"	1.36"	1.46"	0.62"	0.87"
QTP100	28"	39.5"	11.5"	35.5"	52.0"	86.0"	65.0"	137"	64.0"	47.0"	23.0"	21.5"	17.0"	14.5"	17.5"	9.5"	1 3/4"	1"- 12	66.0"	49.0"	20.0"	32.0"	1.36"	1.46"	0.62"	0.87"
QTP150	28"	39.5"	11.5"	35.5"	54.0"	90.0"	68.0"	143"	68.0"	50.0"	27.0"	25.5"	19.0"	15.5"	18.5"	10.0"	1 3/4"	1"- 12	70.0"	52.0"	21.0"	34.0"	1.36"	1.46"	0.62"	0.87"
QTP200	28"	39.5"	11.5"	35.5"	56.0"	94.0"	71.0"	150"	72.0"	53.0"	27.0"	26.5"	20.0"	17.5"	20.5"	10.5"	1 3/4"	1"- 12	74.0"	55.0"	23.0"	37.0"	1.36"	1.46"	0.62"	0.87"

\*We reserve the right to make any technical improvement without further notice.



# L.K. MACHINERY, INC



12480 Superior Court, Suite 2, Holland, MI 49424  
PH: 616.796.0777 • FAX: 616.582.6060 • Cell: 616.403.6245  
sales@LKadvantage.com • www.LKadvantage.com